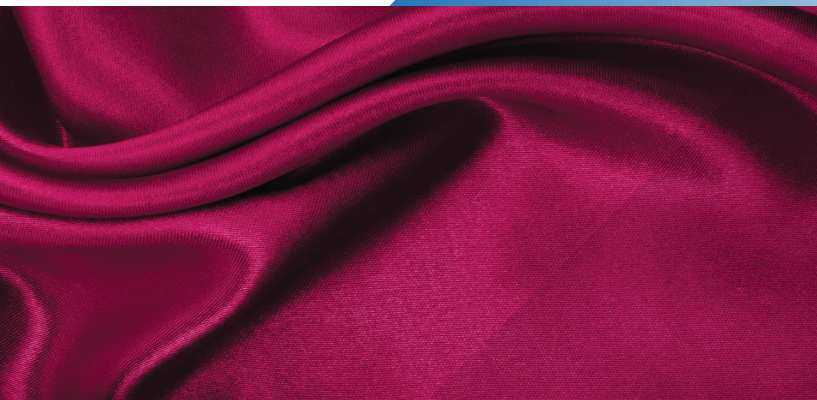
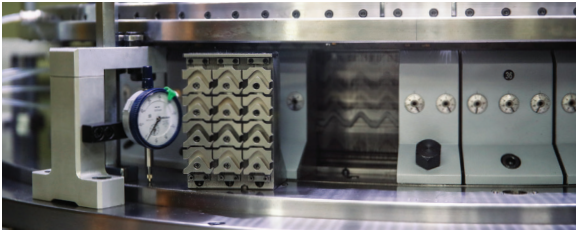
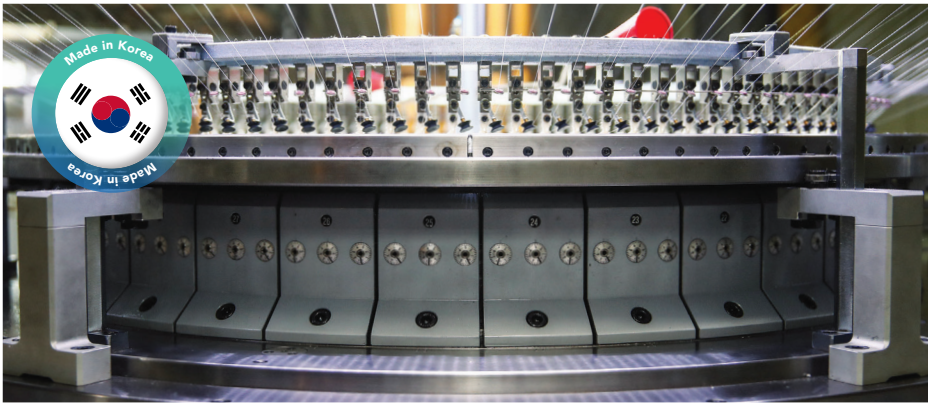


# SS-3-4 SS-4-4 SS-5.6-4

✓  
SINGLE JERSEY  
CIRCULAR KNITTING MACHINE





- Central Stitch Control System – Controls a speedy and uniform stitch length
- When adjusting the Sinker cap ring support the concentricity can be maintained and the convenience of use can be promoted with a flexible movement using two-ball bearings that are mounted on six legs
- The stable structure of the machine is suitable for high-speed rotation and low maintenance cost
- Provides a bright and convenient work environment through LED lighting
- Yarn guide made by Zirconia
- 10 Inch touch panel Monitor



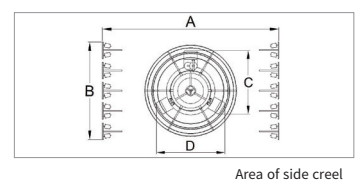
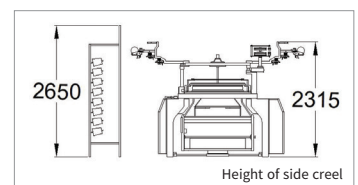
#### Technical Specification

MODEL	INCH	GAUGE	FEEDER
SS-3-4	13~20	16~42	39~60
	21~30	16~42	63~90
	31~40	16~42	93~120
SS-4-4	13~20	16~28	52~80
	21~30	16~28	84~120
	31~40	16~28	124~160
SS-5.6-4	13~20	18~28	72~112
	21~30	18~28	118~170
	31~40	18~28	176~244

#### Dimensions(Include side creel area)

(unit: mm)

Cylinder Diameter	3F / Inch		4F / Inch		C	D
	A	B	A	B		
15~20"	4,680	2,560	-	-	1,800	1,900
22~26"	4,830	3,230	4,960	4,570	1,910	2,030
30"	4,940	3,900	5,360	5,240	2,000	2,130
32"	4,990	4,570	5,560	5,910	2,020	2,160
34"	5,040	4,570	5,720	5,910	2,060	2,200
36"	5,090	4,570	5,870	6,580	2,100	2,250
38"	5,140	5,240	6,110	6,580	2,130	2,280



#### Head Office

88, Jeonggeum-ro 393beon-gil, Gasan-myeon, Pocheon-si, Gyeonggi-do, Republic of Korea  
Tel +82-31-543-8534 Fax +82-31-543-8539 E-mail samesmc@korea.com